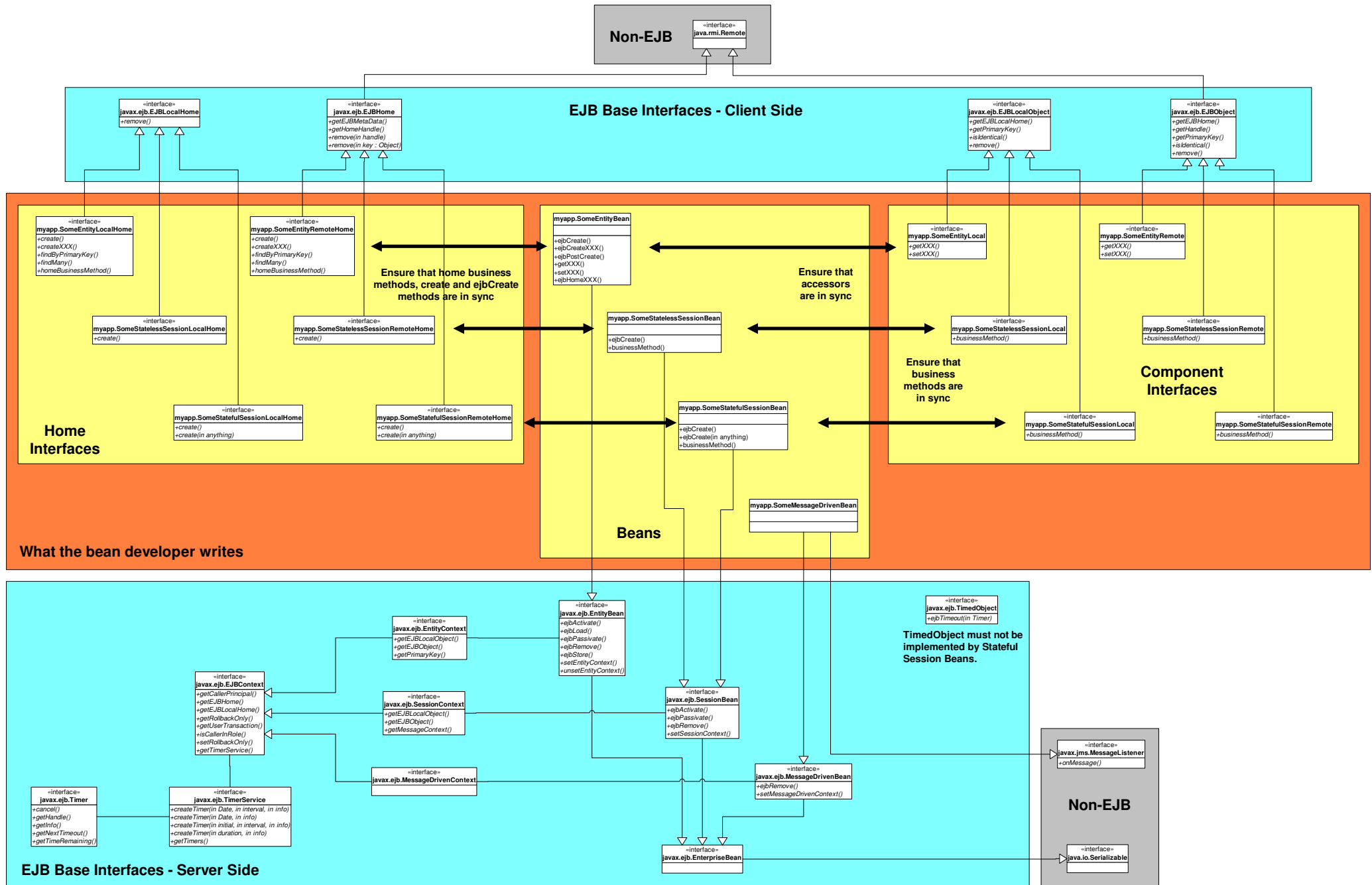


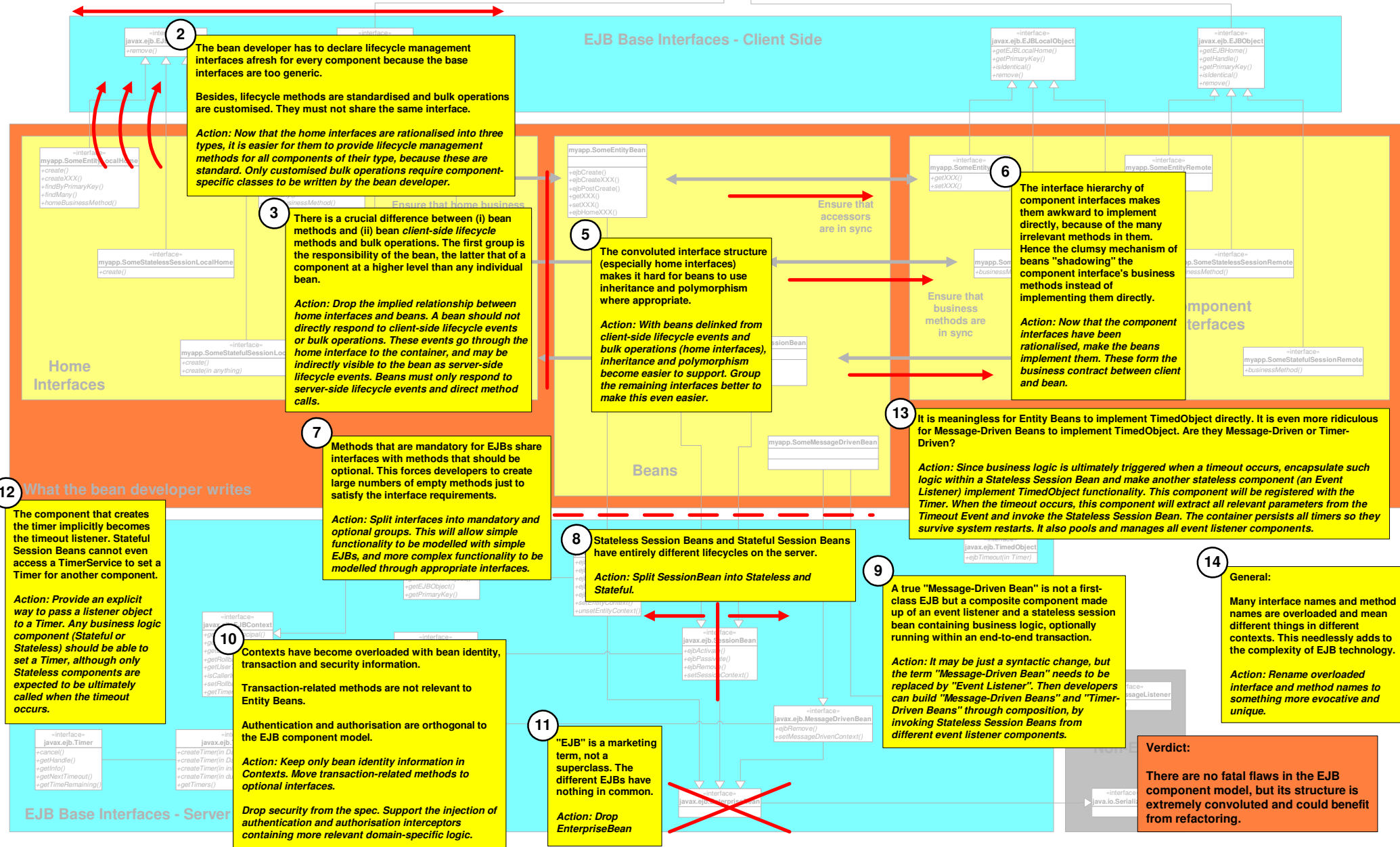
The EJB 2.1 Component Model at a Glance



The EJB 2.1 Component Model Critiqued

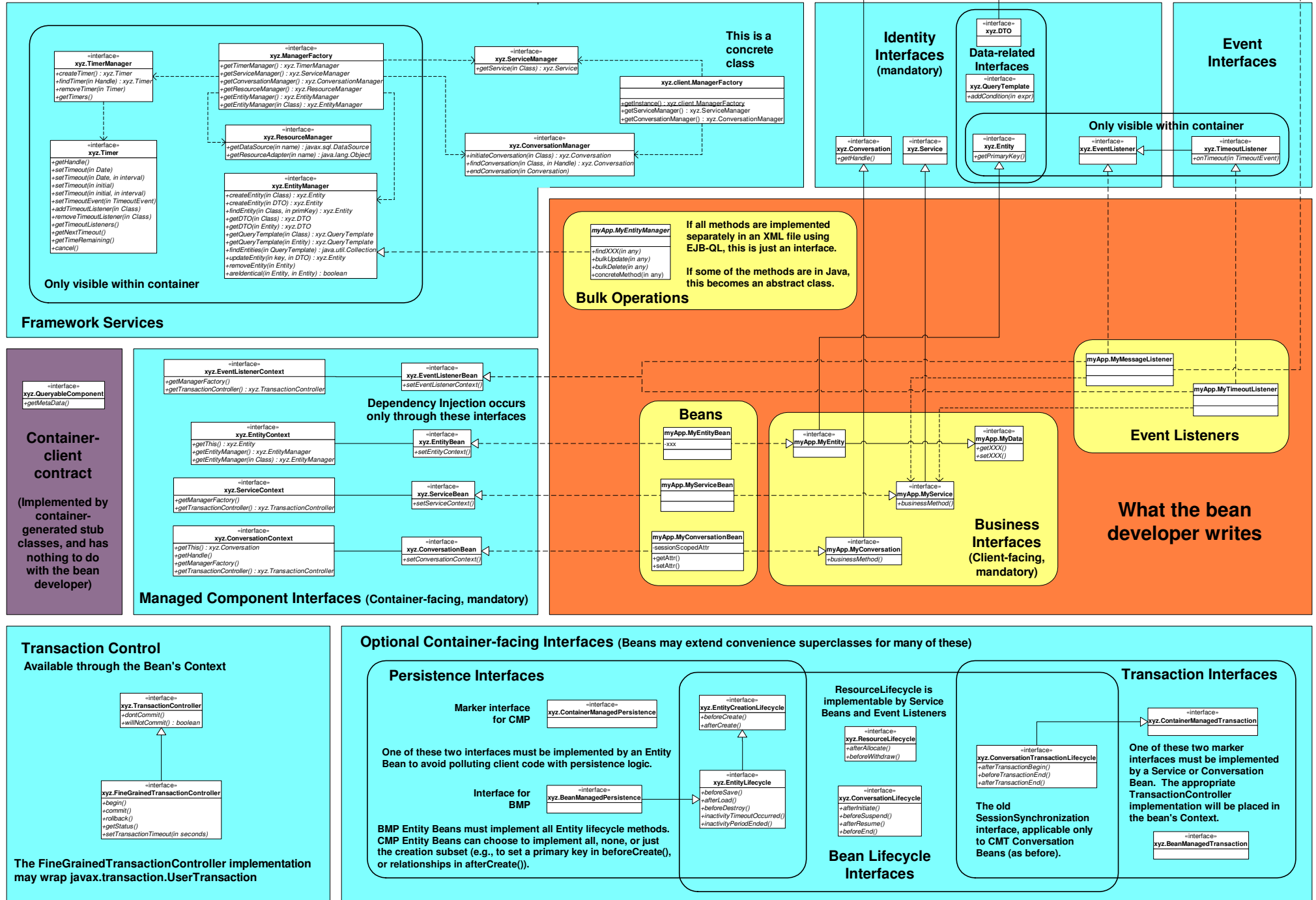
1 Entity, Stateless Session and Stateful Session Beans behave very differently in terms of their client-side lifecycles (e.g., create, find, remove).
Action: Split home interfaces into three, one each for Entity, Stateless Session and Stateful Session. The local-remote dichotomy should be hidden by the framework.

4 Once accessed, Entity, Stateless Session and Stateful Session Beans are also used by clients in very different ways. Using a common superclass pollutes the individual component interfaces with irrelevant methods.
Action: Split the component interfaces into three top-level interfaces, one each for Entity, Stateless Session and Stateful Session. The underlying stub implementations should hide the local-remote dichotomy.

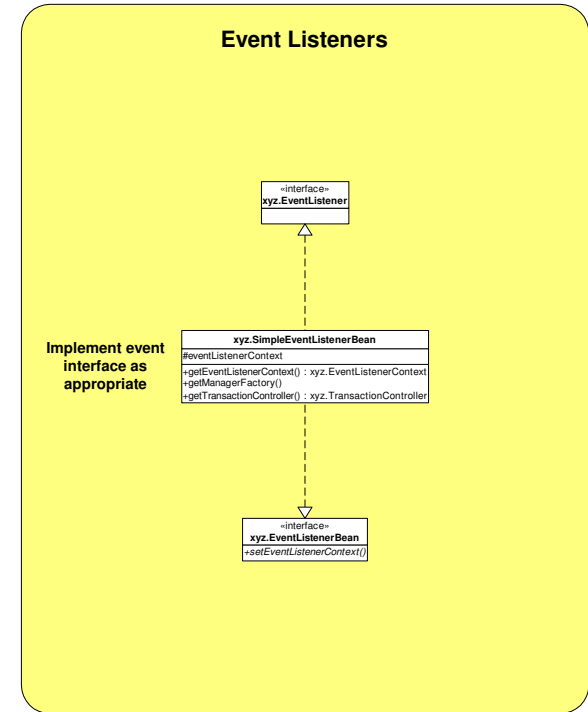
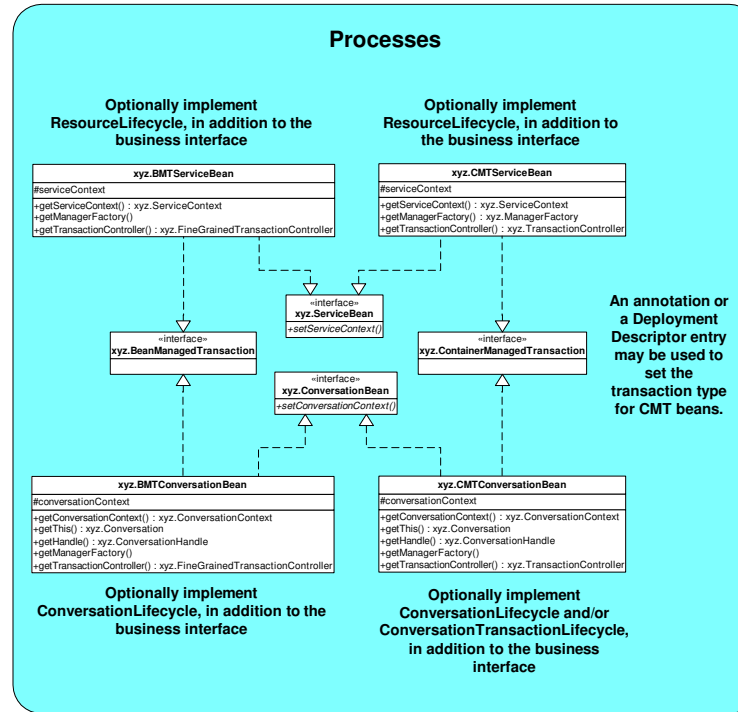
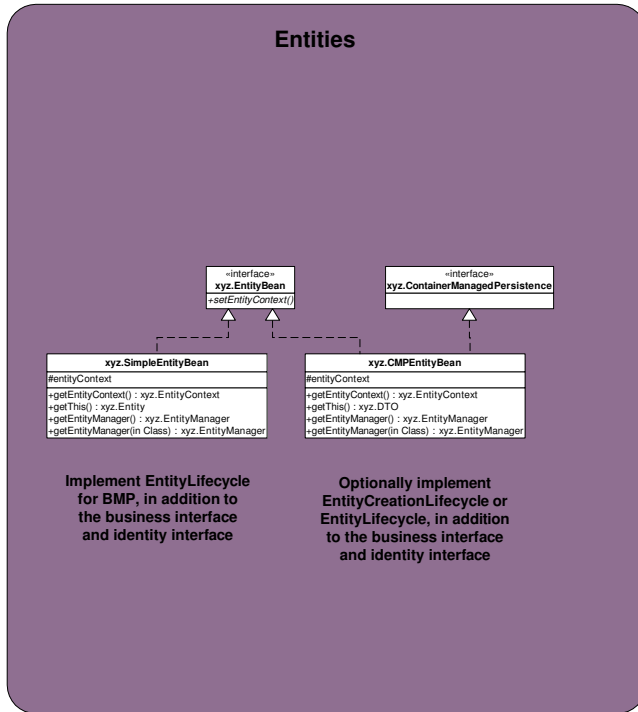


The EJB Component Model Refactored

(The dummy package name "xyz" is used as a placeholder. If adopted as a standard, this may be replaced by an official package such as "javax.ejb".)



Convenience Classes and Usage



Entities and Data Transfer Objects (DTOs)

